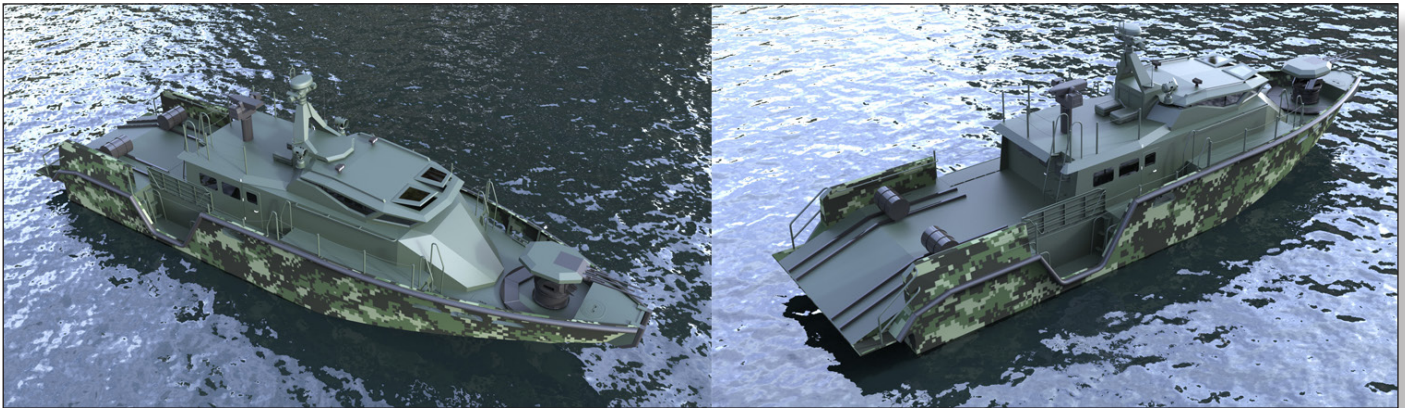


DEVELOPMENT



MULTI PURPOSE SHALLOW-WATER ARMED BOAT

Riverine and coastline patrol boat



PURPOSES :

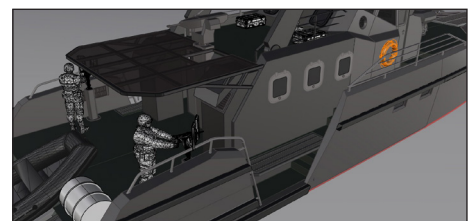
The boat is designed to perform the following tasks:

- patrolling,
- reconnaissance,
- controlling the waterways,
- protection of the water borders,
- opening fire on small enemy vessels and armed groups on the coastline,
- providing fire support to smaller units during combat missions in inland waterways
- mine laying,
- transporting divers and small special forces units,
- scanning and searching the river bottom,
- search and rescue missions.

BOAT ARMAMENT :

The boat is equipped with the following armaments:

- RCWS 20/III mm M55– fore,
- RCWS 12.7 mm – aft,
- M84 machine gun 7.62 mm, or M93 grenade launcher 30 mm – port side,
- M84 machine gun 7.62 mm, or M93 grenade launcher 30 mm – starboard,
- Two rails used for laying various types of mines.



BOAT SERVICE :

A distinctive characteristic of the multi-purpose shallow-water armed boat (max. draught - 1 m) for riverine and coastline patrolling is its small size (max. length - 20 m, max. height with the mast down – 5 m). This ensures poor detectability of the boat during sail, and easy hiding along river banks and between seashore rocks. The boat hull and superstructure are made of aluminum, but can be custom-made of composite materials. The boat can sail upstream with the speed of up to 21.5 kn, but this maximum speed can be increased on customer's request. The boat autonomy is 72 hours, or 1500 km at the speed of 11 kn when sailing upstream. The crew consists of 7 members, but the boat can carry up to 11 troops.

Navigational, Surveillance, and Communication Equipment on the Boat

The boat includes the following navigation and surveillance equipment:

- Navigation radar,
- Automatic identification system (AIS),
- Electronic chart display and information system (ECDIS),
- Meteo-sensor,
- Global positioning system (GPS),
- Sonar,
- Depth meter,
- Compass,
- Observer day/night thermal imager,
- Communication equipment.

